



宏信建发
CDHORIZON

Becoming a trustworthy comprehensive equipment operation service provider

Stock code: 09930. HK

Milestones

- 2011
- Shanghai Horizon Equipment & Engineering Co., Ltd. is established and signs the first contract for shoring system and road equipment rental business, officially embarking on its equipment rental journey.
- 2012
- Tianjin Horizon Equipment Rental Co., Ltd. is established and signs the first contract for aerial work platform rental business, opening up more possible new tracks.
- 2013
- Shanghai Hongjin Equipment & Engineering Co., Ltd. is established with a focus on providing scaffolding system solutions to expand the new disk lock scaffold market, setting off on the path of exploring diversified investment and operation modes.
- 2014
- Hongxin Equipment & Engineering Co., Ltd. and Hongjin Equipment & Engineering Co., Ltd. are strategically integrated into Shanghai Horizon Construction Development Limited, forming multiple product lines, including NEO-SHORING SYSTEM, NEO-SCAFFOLDING SYSTEM, and AERIAL WORK PLATFORM, and stepping into the new stage of integrated equipment operation service.
- 2015
- Guangzhou Hongtu Equipment & Engineering Co., Ltd. is established and recognized as a national “High-tech Enterprise”, taking the lead in building a leading information-driven management system in the industry.
- 2016
- Ranks 38th among Global Top 50 Aerial Work Platform Rental Companies (ACCESS 50) and is the first Chinese company listed in the ranking.
- 2017
- The independently developed Equipment Intelligent Management (EIM) system is officially launched and put into use, becoming the first of its kind in the Chinese equipment rental industry.
- 2018
- Online Internet service platform — Hongxin Shop is officially launched while planning to enter the international market.
- 2019
- The Overseas Business Unit is officially established and signs a contract with a customer from Saudi Arabia — the first overseas business contract.
- 2020
- The company’s independent financing makes a breakthrough, with its total assets exceeding RMB 10 billion for the first time, and becomes the first operational rental company with corporate credit rated AA+ in the industry in China.
- 2021
- Secures a pre-IPO strategic investment of USD 205 million, demonstrating the success of its asset-light business model and substantial progress in the capitalization process.
- 2022
- Ranks 14th globally and 1st in China among Global Top 100 Leasing Service Providers (IRN100); ranks among Global Top 50 Aerial Work Platform Rental Companies (ACCESS 50) — among top three globally and 1st in Asia; wins the Takeoff Award of “Leading Green Rental Company”. In the same year, the total number of patents and software copyrights reaches 389, enhancing the core competitiveness of smart management through independent R&D and innovation.
- 2023
- The company is successfully listed in the Stock Exchange of Hong Kong and officially enters the international capital market. In the same year, the overseas business unit of CDHORIZON is established, and business outlets are opened in Malaysia, Indonesia and Hong Kong, China to realize operation in physical outlets outside the Chinese mainland.



WECHAT OFFICIAL



WECHAT CHANNEL



TIK TOK

Horizon Construction Development Limited

As a subsidiary of Far East Horizon (03360.HK), Horizon Construction Development Limited ("CDHORIZON") is an integrated equipment operation service provider. It has been committed to providing multifaceted, multifunctional services throughout the entire life cycle by leveraging architectural and construction equipment and materials to reconstruct the equipment supply chain system, thereby continuously creating value for users. In 2023, CDHORIZON was listed on the main board of the Stock Exchange of Hong Kong (SEHK), with the stock code 09930.HK.

Since its establishment in 2011, the company has become the largest and strongest integrated equipment operation service platform in China, with total assets exceeding RMB 30 billion, ranking 14th in the IRN100, and serving over 190,000 clients in total. Through continuously promoting independent R&D and innovation, and developing strategic cooperation with multiple front-line equipment manufacturers, well-known universities, and research institutions both domestically and internationally, the company has possessed hundreds of patents and intellectual property rights, and two of its subordinate platforms have been recognized as "National High-tech Enterprises".

Effective coordination and connection of the three product lines "AERIAL WORK PLATFORM, NEO-SHORING SYSTEM, and NEO-SCAFFOLDING SYSTEM" has been achieved by CDHORIZON. Based on the complete process of the same project, the Company provides clients with efficient equipment supply chain solutions and has built a comprehensive operation service system centering on the "full-cycle management" of construction machinery and equipment, in an effort to improve efficiency and safety and lower costs, thereby creating high-quality green projects.

In recent years, as China has been implementing the Belt and Road Initiative and other initiatives for enterprises to establish international presence, CDHORIZON has steadily expanded its overseas business layout, continuously improved its internationalization level and enhanced its global competitiveness. Adhering to the vision of "becoming a trustworthy comprehensive equipment operation service provider", the company leads the development of the industry and goes global for shared prosperity.

Parent Company

Registered and established in Hong Kong, Far East Horizon Limited (FEHORIZON) is a conglomerate spanning across finance and industry with Hong Kong and Chinese Mainland as main market and devoted to global business expansion. Since 2011, it has been listed on the Main Board of Hong Kong Stock Exchange, stock code 03360.HK. With "integrating global resources and promoting industry development" as its mission and serving real economy its focus, over the years FEHORIZON has been leading the industry development and continuing to hold a position on the Fortune China 500 list and the Forbes Global 2000 list, through leveraging its advantages of marketization, internationalization, and specialization.

Embedded in the basic industry, FEHORIZON provides integrated financial services including financial leasing, commercial factoring, cross-border finance, infrastructure investment, equity investment, inclusive finance, and asset business in fields including urban public utility, healthcare, cultural tourism, engineering construction, machinery manufacturing, chemical engineering & pharmacy, electronic information, people's living consumption, and transportation & logistics. Meanwhile it conducts industry operations such as equipment operation (CDHORIZON, 09930.HK), hospital operation, health care for the elderly, and education.

Headquartered in Hong Kong, FEHORIZON has established operation centers in Shanghai, Tianjin and Guangzhou, and set up additional offices in more than 30 core cities. Its subsidiaries have formed an extensive service network covering the entire Chinese mainland. With assets exceeding 300 billion yuan and over 20,000 employees, FEHORIZON has cumulatively served more than 30,000 corporate clients through comprehensive financial services and invested more than 1000 billion yuan in real economy.



CDHORIZON | BUSINESS LAYOUT



415

Outlets in the Chinese Mainland

4

Outlets Beyond the Chinese Mainland
(including outlets in China's Hong Kong,
Malaysia and Indonesia)

Covering

Nearly **200** Cities

Headquartered in Tianjin, CDHORIZON has four
operating centers in Shanghai (Jinshan and Jiading),
Tianjin (Wuqing) and Guangzhou (Nansha) respectively.

*The map on this page is a schematic diagram.

In the new era, CDHORIZON will focus on its business in Singapore and Malaysia, and engage in business exchanges and cooperation in Southeast Asia, the Middle East, North Africa, and Eastern Europe, including Vietnam, Indonesia, and Hong Kong, China. The scope of its business covers the sale of new machines and accessories, the purchase and sale of used equipment, equipment rental, procurement services, etc. Meanwhile, the company will establish subsidiaries in relevant countries step by step to gradually explore localized operations, thereby laying the foundation for future exploration of overseas investment and M&As.

AERIAL WORK PLATFORM

ACCESS 50

World
NO. 3

Asia
NO. 1

T50

China top 10 aerial work platform service providers
for five consecutive years

NO. 1

Quantity of Equipment

≈160,000

Units

No.1

Industry Ranking
in China

Layout

≈300

Service Outlets

≈200

Cities

The product line of the AERIAL WORK RENTAL PLATFORM of CDHORIZON covers aerial work trucks, towable boom lifts, telehandler reach forklifts, glass attachment boom lifts, and other equipment, all of which come from Chinese and foreign leading manufacturers, including XCMG, Zoomlion, LGMG, Zhejiang Dingli, JLG (USA), TEUPEN (Germany), and AIRMAN (Japan). Additionally, it has engaged in in-depth cooperation with these manufacturers by participating in the joint research and development, repair, and maintenance of equipment based on different operation scenarios, and the company has become the designated agent of many of these manufacturers for sales, maintenance, and after-sales services. So far, CDHORIZON has become the primary channel for equipment manufacturers to reach end users, creating an equipment layout covering the entire product line and all scenarios.

Gold Standard Service

CDHORIZON took the lead in the industry to propose: rapid response within 15 minutes, the ratio of dispatchers to machines being 1:3900, equipment delivery within average 37-km radius, quick response to on-site maintenance requirements within 1.5 hours, and other service standards.

Intelligent Operation

CDHORIZON now provides digital business services such as mobile ordering, e-settlement, remote detection, and one-click locking. The nationwide service network and retail operation system enable us to provide clients with one-stop aerial work solutions, thereby shortening response time and greatly improving service quality and efficiency.

AERIAL WORK PLATFORM | PRODUCTS



Telescopic Boom Lifts

THEY ARE USED IN CLEANING OF EXTERIOR WALLS, GLASS, AND WINDOWS; INSTALLATION OF ADVERTS IN SHOPPING MALLS; RENOVATION OF EXTERIOR WALL COATING, DAILY MAINTENANCE OF PLANTS, AND MAINTENANCE OF LARGE SCULPTURES.



Scissor Lifts

THEY ARE USED IN MICRO RENOVATION; RENOVATION OF WATER SUPPLY, DRAINAGE, AND HEATING PIPES; TRIMMING OF LANDSCAPING PLANTS AT PARKS; MAINTENANCE OF FACILITIES AT HEIGHTS; AND INSTALLATION OF ROADSIDE ADVERTISING DECORATIONS.



Atrium Boom Lifts

THEY ARE USED IN INDOOR OPERATIONS WITH REQUIREMENTS FOR GROUND-BEARING CAPACITY, SUCH AS SET-UP, DECORATION AND MAINTENANCE AT HEIGHTS OF STADIUMS OR SHOPPING MALLS.



Articulating Boom Lifts

THEY ARE USED IN THE COMPLEX ENVIRONMENT OF CONSTRUCTION SITES FOR OBSTACLE-CROSSING CONSTRUCTION, SUCH AS MAINTENANCE OF THE TOP OF A WORKSHOP, PIPELINE RENOVATION, AND ROOF-CROSSING CONSTRUCTION.



Glass Attachment Boom Lifts

THEY ARE MAINLY USED FOR TRANSPORTING GLASS, AND USED IN GLASS MANUFACTURING AND PROCESSING, AND INSTALLATION OF GLASS CURTAIN WALL AND GLASS AT CONSTRUCTION SITES, ETC.

AERIAL WORK PLATFORM | PROJECTS



Plant Construction | CALT Project



Municipal Construction | Curtain Wall of Exhibition Center at Laser Town, Suqian



Amenities | Renovation of Yijiang Community, Ningbo



Municipal Construction | Humen Railway Station Expansion Project



Cultural Operation | Silk Road Paradise



Modern Agriculture | China Flower Expo in Chongming Island, Shanghai

NEO-SHORING SYSTEM

China Construction Materials Rental Contracting Industry
Famous Bailey Trestle Brand

CDHORIZON NEO-SHORING SYSTEM

Weight of Products

≈1.6

million tons

No.1

Industry Ranking
in China

Patented Technologies

≈20

Invention Patents

>80

Patented Technologies

The NEO-SHORING SYSTEM of CDHORIZON provides full-category solutions and supply chain services integrating scheme design and engineering management. The products of the system include steel strut, steel H-beam, lassen steel sheet piles, HC strut, PLC pile, HLC pile, Bailey bridge, construction platform, Bailey trestle, steel strut axial force servo system, supporting axial force multi-point synchronous loading system, and foundation pit monitoring system. The system provides unique, comprehensive solutions for key, large-scale, and high-end projects in a wide range of construction fields, including subways, viaducts, tunnels, utility tunnels, ducts, houses, rivers, ports, plants, bridges, and high speed railways. It has participated in 16,000 projects and served 7,000 clients in total.

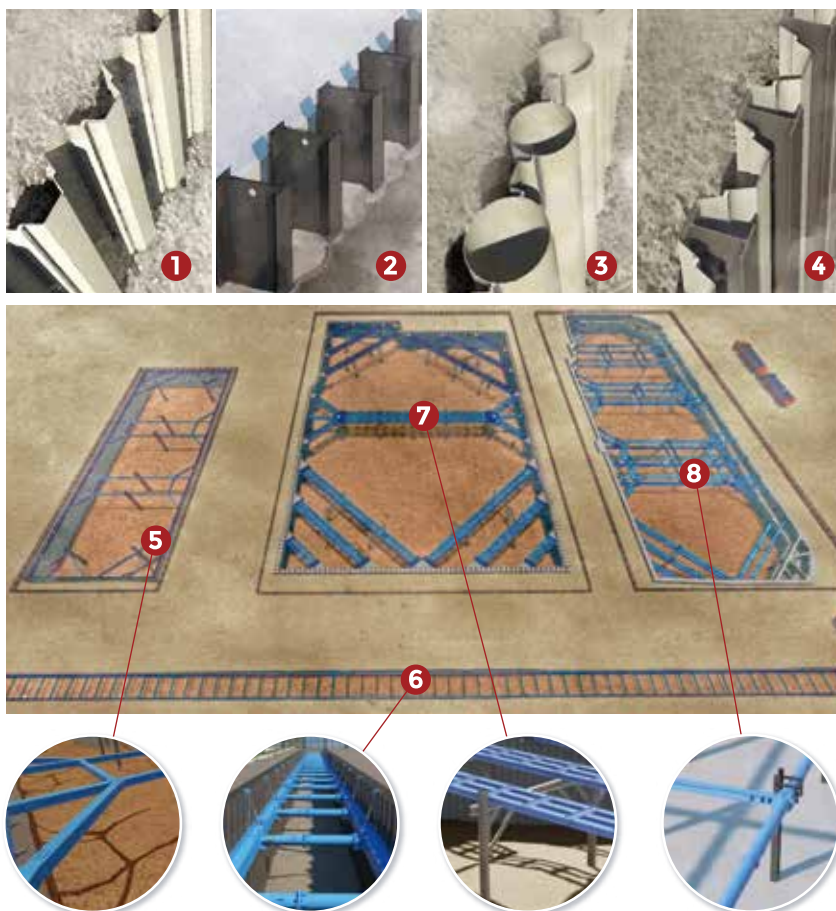
Technology Empowerment

With over 80 patented technologies, experts across China, and full-function, high-quality, recyclable core products using our own patented technologies, the NEO-SHORING SYSTEM has helped CDHORIZON win the certification of "National High-tech Enterprise".

Green Construction Methods

The products of the system use environmentally friendly recyclable materials, with quality higher than relevant national production standards. A digital warehouse network planning model and an intelligent material quality monitoring system, as well as proprietary construction methods and an industry-leading project management system are used to cover the vast majority of underground construction projects and other complex construction scenarios.

Green Intelligent Foundation Pit



1 LASSER STEEL SHEET PILE

Lassen steel sheet piles are driven into the ground with a pile driver or a vibratory hammer, to build a recyclable continuous steel wall that can retain soil and water. They feature occupation of small floor space and simple and fast construction, and can be used in projects including cofferdams and deep foundation pits.

2 STEEL H-BEAM

Steel H-beams are inserted into the cement soil to form an enclosure wall, and can be used in deep foundation pit projects in various soils with an excavation depth up to 15 meters.

3 PLC PILE

It refers to the continuous enclosure wall, which is formed by connecting Larsen steel sheet piles and steel tubes by means of lock buckles. It is suitable for cofferdams and deep foundation pit projects in various soils with an excavation depth up to 20 meters.

4 HLC PILE

It's a new type of continuous enclosure walls formed by combining Larsen steel sheet piles and steel H-tubes. It is suitable for deep foundation pit projects with an excavation depth up to 15 meters.

5 H-SHAPED STEEL STRUT

It's fully prefabricated, allows for the application of prestress, and has excellent deformation control performance. It is mainly used in municipal facilities, plants, and foundation pits for bridge bearing platforms.

6 TRENCH STRUT

It is suitable for narrow width, shallow excavation depth and trench type pits with small space, featuring light weight, fast construction, and low cost.

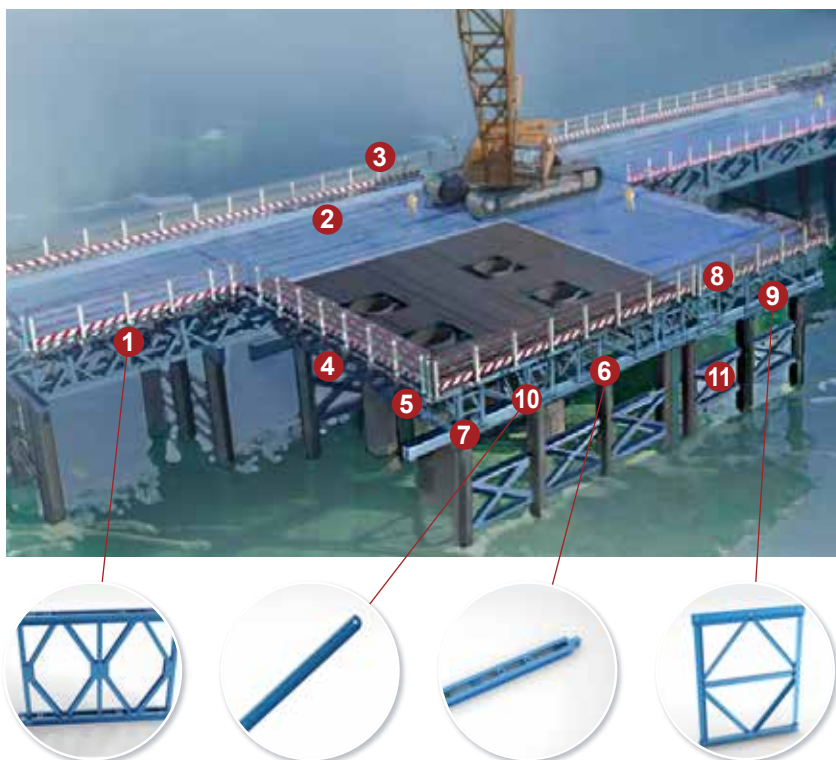
7 HC STRUT

It refers to a form of strut with larger stiffness and excavation space, and is mainly used in deep foundation pits of industrial and civil construction projects.

8 STEEL PIPE STRUT

Prefabricated steel pipe strut is convenient for construction, requires less welding work, and is applicable to a wide range of depths. It is widely used in construction of buildings, municipal facilities, and subway foundation pits.

Fully Prefabricated Bailey Bridge



1 BAILEY TRESTLE

It uses the Q355 high-strength structural steel of national standard product size, and adopts a new processing technology which allows for 4-hole precise positioning.

2 DECK SLAB

The new design concept and processing technology enable seamless connection and holeless design of the entire bridge deck.

3 RAILING

It's made of bent galvanized steel tubes with a diameter of 48 millimeters, and its upright tubes are made of 12 I-beams, with the base cast with special structures.

4 BEARING BEAM

It's made of double-lattice 45 C-beams, with a wide range of applications and good structural load bearing to meet most project requirements.

5 DISTRIBUTION BEAM

It's made of 25A I-beams, with a wide range of applications and good structural load bearing to meet most project requirements.

6 REINFORCED CHORD

It adopts the Q355 high-strength structural steel of national standard product size, and the new processing technology can control the size of key junctures.

7 CLAMPING PART

It's made of bent round steel, divided into upper and lower clamping parts; and can be classified by length into clamping parts with and without reinforced chords.

8 SKIRTING BOARD

It's made of bent galvanized steel plate.

9 FORMWORK SUPPORT

It is made by welding Q355 high-strength angle steel, available in standard sizes of 450 mm and 900 mm.

10 DIAGONAL BRACE

It's made of No.10 channel steel which increases the transverse stiffness of the bridge.

11 CROSS BRACE

NEO-SCAFFOLDING SYSTEM

National Product Standard Setting Institution
Premium Enterprise in China Formwork and Scaffold Rental
Contracting Industry

Quantity of Products

≈650,000
tons

No.1
Industry Ranking in China

Full-function Configuration

12
Categories

>3400
Specifications and Models

The main products include φ48 and φ60 disk lock scaffolds, galvanized steel tubes and scaffolds with couplers. The company's business meets the personalized construction needs of different types of clients in municipal, industrial, civil, and special construction projects. The company provides large-scale high-quality projects of clients with holistic and comprehensive scaffolding system construction services, including scheme design, construction implementation, and material management.

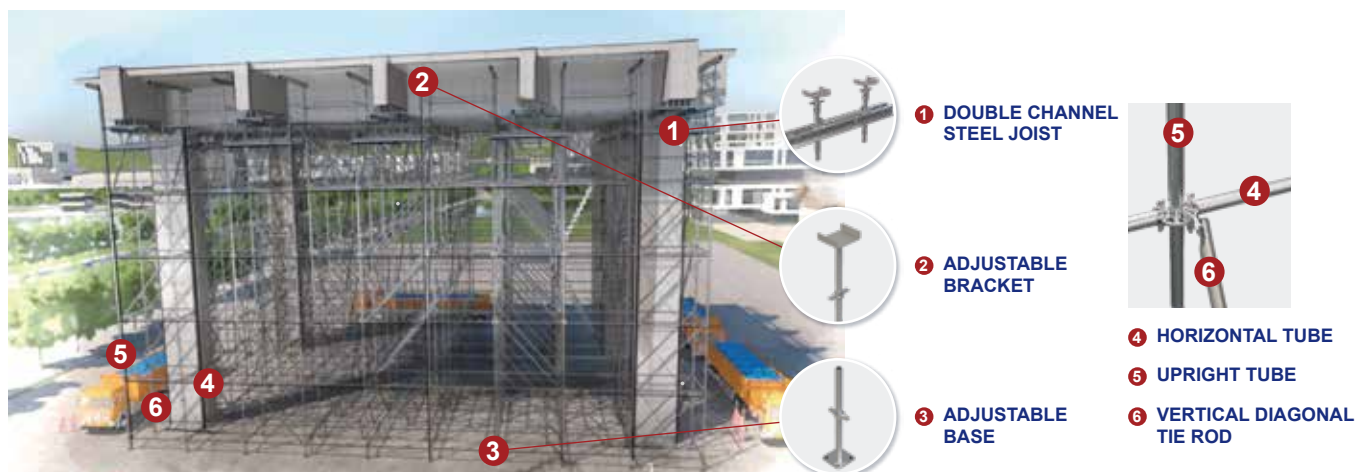
Leading Quality Control

The NEO-SCAFFOLDING SYSTEM of CDHORIZON has about 50 patents. Its products are made using fully automated production lines and cutting-edge technologies in China and the consistency of the products is significantly higher than the industry average in China. The products are divided into more than 12 categories and over 3,400 specifications and models, ranking first in the industry.

Low Carbon and Energy-Saving

The company's products are safe, reliable, environmentally friendly and energy-saving, featuring beautiful appearance, easy installation and disassembly, convenient transportation, excellent quality and complete functions. The products can satisfy the needs of construction clients for multi-level and multi-process green low-carbon materials.

Disk Lock Scaffold



NEO-SCAFFOLDING SYSTEM | PROJECTS



Suzhou UWC Innovation Island Project

Gross floor area: 208,300 m²
Leased equipment: about 6,000 tons
General contractor: China Construction Fourth Engineering Division Corp. Ltd.



Construction Project of Block A in the First Development Zone of the Strategic Emerging Industry Park in Qianwan New Area, Ningbo, Zhejiang Province

Gross floor area: 250,000 m²
Leased equipment: about 15,000 tons
General contractor: Ningbo Construction Co., Ltd.



Phase II of the Sci-tech Innovation-based Standardized Plant Construction Project in Hongze District, Huai'an City, Jiangsu Province

Gross floor area: 515,000 m²
Leased equipment: over 10,000 tons
General contractor: China Construction Third Engineering Bureau Group Co., Ltd.

ROAD CONSTRUCTION



Construction Technology Team

100⁺ members

Projects

6500⁺

Self-owned Construction Equipment

200⁺

Clients

2000⁺

ROAD CONSTRUCTION of CDHORIZON is committed to providing materials and construction, milling and cleaning services for cement-stabilized stone layers and asphalt roadbeds of all grades of highways, municipal roads and large-scale roads in parks. With professional construction management, standardized construction operation and strong financial capacity, the company delivers quality projects to clients.

Clients *Listed in no particular order



Service Outlets

ROAD CONSTRUCTION mainly operates in Central China, East China and South China, focusing on the Yangtze River Delta Economic Circle, the Pearl River Delta Economic Circle, the Yangtze River Middle and Lower Reaches Economic Circle and the Chengdu-Chongqing Economic Circle. It offers professional roadbed construction services to general contractors of State-owned enterprises (SOEs) across China.

Construction Qualifications

Grade III General Contractor Qualification for Municipal Public Works Construction

Grade III Professional Contractor Qualification for Highway Roadbed Construction

Qualification of Construction Labor Service Enterprise, Labor Service Subcontracting Not Graded

ROAD CONSTRUCTION | PROJECTS



POWER GENERATION EQUIPMENT

Power Generation Capacity

>80 MW **120** TOP 3
Power Generation Capacity Units In China

Equipment

7 **65**
Categories Specifications and Models

CDHORIZON is a temporary power supplier and standby power service provider. It offers one-stop and diversified services and power design solutions such as generator sets, cables, power distribution cabinets, load banks, transformers and other power supply supporting equipment. Those equipment and solutions are widely used in activities, exhibitions, competitions, mine construction, marine engineering, factory construction, shipyards, road and bridge construction, urban construction and other fields.

One-stop Solutions

After years of practice, CDHORIZON has established an equipment management service platform focusing on power generation equipment. Based on equipment rental, the company integrates various cooperation models such as sales, installation, operation and maintenance, and rent-to-own of power generation equipment to provide clients with innovative, safe and convenient services. It is devoted to combining products and services and leveraging the Internet and physical service outlets to build itself into the largest integrated equipment operation service provider in China.

Service Guarantee

Quality assurance, ultimate power, and clients first
Professional operators, professional maintenance teams and professional technicians
Equipment of high power, low fuel consumption, and low noise
Efficient and professional construction team providing excellent services

POWER GENERATION EQUIPMENT | PROJECTS



Power supply project during COVID-19 pandemic in Wuhan

During the fight against the pandemic in Wuhan, from identifying the needs of hospitals to on-site surveys and designing and reviewing plans, the **11-member** team from CDHORIZON worked more than **18 hours** a day for **77 days** to guarantee the power supply of **35** hospitals and completed **41** temporary power supply projects, realizing **zero** failure, **zero** interruption and **zero** mistakes.



Load test of the Arctic condensate tanker

Uses a load bank of **24,000 kVA** capacity

25,200 kVA pad-mounted transformer

4,000 m high and low voltage cables

Four CDHORIZON employees on duty at the scene to ensure the normal operation of the project



Renovation of power systems in communities

Business: Emergency power supply

Renovation of State Grid lines of the municipal power supply company, capacity expansion of transformers in old communities and replacement of high voltage lines

Clients: Tianjin Chengxi Guangyuan Electric Power Engineering Co., Ltd.

Number of communities involved: **300+**

Coverage area: Nankai District, Hongqiao District, Beichen District and Xiqing District of Tianjin



Conference on the Bund

CDHORIZON, the main supplier of emergency power supply for the Conference on the Bund, is dedicated to providing higher-quality power supply for the Conference.

The micro-grid power supply mode with a generator set as the primary power source ensures uninterrupted power supply at the power source end, guaranteeing safety during the entire installation and construction, and meeting the requirements of the venues; all power supply phases ensure uninterrupted operation during working hours to meet the requirements of "zero interruption" and "zero flickers"; a special sound insulation wall is built in the power supply area to ensure low noise, without affecting the smooth progress of the on-site activities of the Conference; and each load is independently powered to avoid harmonic intervention.

